



Bring Magic to Your Petite Space!

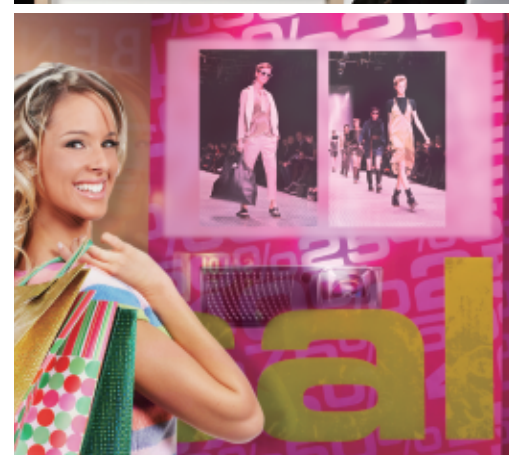
The distance for enormous view is barely a meter away

One projector brings up an impressive presentation; another brings fun into the classroom. One more brings the joy to the family. Perhaps you only need one. Optoma is now presenting the first ultra short throw projector **EX525ST**.

All new designed advanced ultra short throw lens (0.6:1) reduces two third of projection distance that enable a 80 inch view in less than a meter and protect the performers' eyes from direct light beam. It is not only a best companion to interactive electronic whiteboard in the classroom and window signage. It also fits every room everywhere. **EX525ST** offers boundless possibilities and we invite you to explore more!



EX525ST

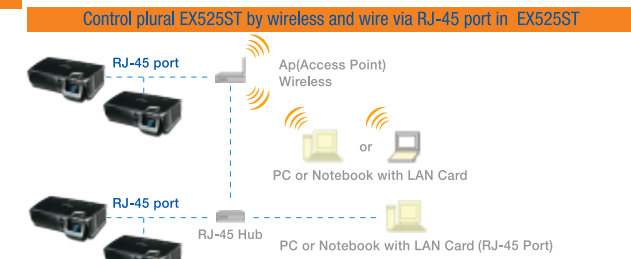


- **New generation DLP® Technology 0.55" DMD Chip**
Projector with native XGA resolution delivering sharp and high-quality images
- **Outstanding 2500 ANSI Lumens & 2200:1 Contrast Ratio**
Presenting pictures with excellent lumens output in vivid color, crisp quality, and brilliant clarity
- **Ultra Short Throw 0.6:1 Allows for Ultimate Space Saving**
Stand-alone or ceiling mounted the EX525ST allows you to present with ease (60" at 0.75m/77" at 0.95m); assure viewers with obstruction-free images and an escape from heat during projection
- **Enhanced Security Features**
Security bar/password protection/pin code/security timer offer the maximum protection from theft and unauthorized users
- **Extensive Connectivity Options**
1 independent Digital-In + 2 independent Analog-In + 2 independent Audio-In + built-in 8W speaker + others
- **Dual Support Network Management & Central Control**
RJ45 & RS232 connections with projector ID programmable
- **User Friendly Design**
 - More display mode available (Blackboard Mode & Classroom Mode)
 - Quick power on/off
 - Remote Control with Mouse function via USB
 - DLP® filter-free design for zero maintenance

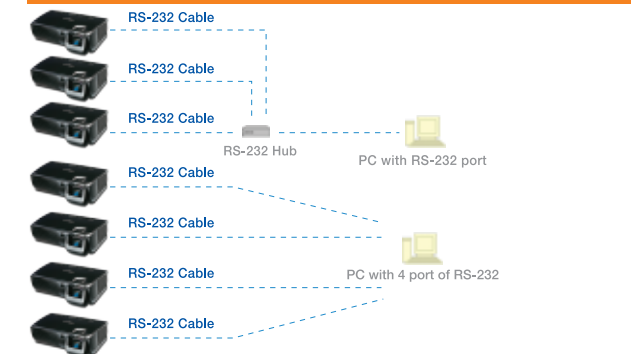


EX525ST

NETWORK MANAGEMENT

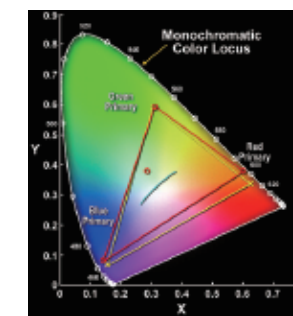


Control plural EX525ST by wire via RS-232 hub or directly with projector ID in EX525ST



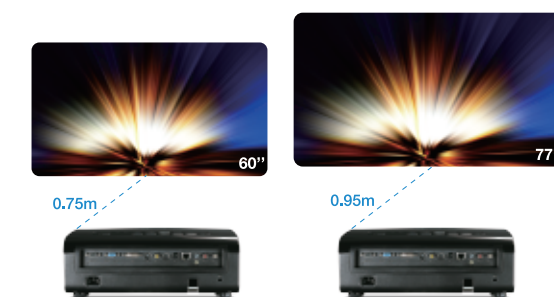
Color Enhancement Technology

Optoma 6 segment color wheel produces true vivid color and maximized color accuracy, displaying more vibrant and deeper yellow color than previous XGA DLP® models



Ultra Short Throw Projection

60" image could be attained from distance of 0.75m, and 0.95m for 77" image



10-Year Color Guarantee

Optoma guarantees color quality will stay as vibrant and vivid for ten years



| Specification | EX525ST |
|-----------------------------------|---|
| Display Technology | TI DLP® Technology/0.55" XGA DarkChip2 DMD Chip |
| Resolution | Native XGA(1024x768), Computer capability up to UXGA (1600x1200) 60Hz |
| Brightness (typical) | 2500 ANSI Lumens |
| Contrast Ratio | 2200:1 |
| Displayable Colors | 134.2 million colors |
| Projection Lens | F# 2.59, f = 6.97mm; Fixed lens (digital zoom 0.8x - 2x) manual focus lens |
| Projection Image Size | 41 to 303.5 inches |
| Projection Distance | 0.5m - 3.7m |
| Throw Ratio | 0.6 : 1 (distance/screen width) |
| Keystone Correction | ±40° (Vertical) |
| Scan Rate | H: 15-100 KHz / V: 43-85 Hz |
| PC Compatibility | UXGA, SXGA+, SXGA, XGA, SVGA, VGA Compression, VESA standards, PC signal & Macintosh compatibles |
| Video Compatibility | HDTV (720p, 1080i/p), SDTV (480i/p, 576i/p), Full NTSC, PAL, PAL-M, PAL-N, SECAM |
| Input / Output Connections | DVI-I(PC VGA/YpPr/RGB)/DVI-D with HDCP support HDMIx1, VGA(YpPr/RGB/SCART)x1, S-Videox1, Composite Videox1, Audio input RCA pinx1, Audio input mini-jackx1, VGA outputx1, Audio output mini-jackx1, RJ45x1, USB Port (For wire-less mouse/ service)x1, RS-232 control interfacex1, IR receiversx2(front & back) |
| Uniformity | 85 % |
| Lamp Type | 200-watt P-VIP user replaceable lamp |
| Estimated Lamp Life | 4000 hours (STD mode) / 3000 hours (Bright mode) |
| Speaker | 8W speaker |
| Power Supply | AC input 100 - 240V; 50/60 Hz |
| Weight | 4.3 kg |
| Operational Noise | 28dB (STD mode) |
| Dimensions (WxDxH) | 339 mm x 276mm x 122 mm |

Projection Distance (meter) Image Size (4:3 diagonal inch)

| Projection Distance | Minimum Image |
|---------------------|---------------|
| 0.5 | 41.0 |
| 0.7 | 57.4 |
| 1.0 | 82.0 |
| 1.2 | 98.4 |
| 1.5 | 123.0 |
| 2.0 | 164.0 |
| 2.5 | 205.1 |
| 3.0 | 246.1 |
| 3.5 | 287.1 |

For guide purposes only

Available from:

www.optoma.com

All Specifications are subject to change without notice. © 2008, Optoma Corporation. DLP® and the DLP® medallion are trademarks of Texas Instruments. All other names mentioned herein are property of their respective owners.

OP-EX525ST-200808